



# FLOODLIGHTS

DESIGN, MANUFACTURE, INSTALL & MAINTAIN



## CONTACT US

☎ +44 (0) 1920 860600  
✉ [hello@cuphosco.com](mailto:hello@cuphosco.com)  
🌐 [cuphosco.com](http://cuphosco.com)

© 2024 CU Phosco





## CU PHOSCO FLOODLIGHTS

Durable and reliable products for even the toughest environments

Built to withstand the toughest of environments, the CU Phosco Floodlights "FL" range can be seen in ports, airports, sports stadiums and on highways across the globe. The unique patented technology provides superior luminaire efficacy with high performance LEDs.

Our range can be used in a variety of combinations to meet your requirements in the most cost effective manner, offering advanced LED technology, low cost of ownership and an increased lifecycle. Easy to install and maintain, this range is designed to future-proof your lighting scheme.

Designed with a low wind area, our FL Floodlights are ideally suited to retrofit applications as well as new-build projects.



# OUR FLOODLIGHTS

## SUPERIOR DESIGN & BUILD

- Our products are designed by our experienced and dedicated in-house team of lighting professionals.
- Made in Britain
- Quality assurance to BS EN ISO 9001
- Designed to EN 60598-2-5
- International standards tested
- Warranty assured
- Finance options available

## BUILT WITH CIRCULARITY IN MIND

- Responsibly sourced materials
- 100% recyclable or reusable materials
- Designed to meet exact requirements with no unnecessary raw materials required
- Built to last – rigorous testing for vibration, thermally electrically and photometrically tested in our ISO 17025 accredited laboratory.

## WORKING WITH CU PHOSCO YOU RECEIVE:

- Unrivalled product quality
- Outstanding customer service
- Agile and adaptable working – we work together to build long-term partnerships
- Collaboration with an innovative family-run organisation. We are continually improving and evolving as we strive for continuous improvement and best practice





## CU PHOSCO FLOODLIGHTING RANGE

High quality, low-cost floodlighting solutions to take care of your area lighting needs

### FL820

#### RELIABLE, AFFORDABLE LIGHTING FOR ILLUMINATION OF LARGE AREAS

FL820 has two products in the range: FL820 – Area and FL820 – Stadia. Designed for high output, low glare illumination of large areas.

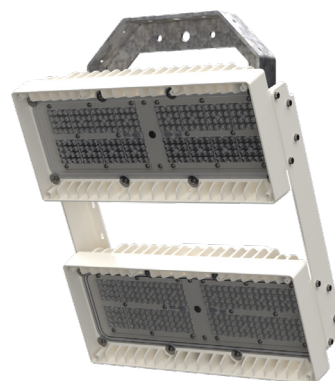
#### FL820 – AREA

Floodlights have been designed for use in larger areas such as ports and airports which require specific ground space to be lit. Our floodlights are fully cowled to offer full cut off and with a wide range of optics can provide optimal coverage, sending the light to where it is needed and targeting specific spaces to be illuminated.



#### FL820 – STADIA

Used for sports fields, stadiums and arenas and have been designed to meet the demanding illumination and glare control requirements of all levels of sporting activity in all weather conditions.



- The FL820 range complies with ETL guidelines for White Light Emitting Diode Lighting Units and is eligible for the Enhanced Capital Allowance (ECA) scheme.



### FL830 – AVIATION

Ideal for airport aprons, the FL830 is a smaller version of the FL820 yet offers the same illuminance and reduction of glare.

Specifically designed to offer enhanced light distribution whilst maintaining the FL range philosophy of full cut off, low glare and efficient heat dissipation. The custom optics make this Floodlight perfect for lighting airport aprons efficiently and even reducing the number of floodlights needed to meet required levels.





## Victory Monument Roundabout, Bangkok

The primary objective of the project was to upgrade the lighting at the roundabout to energy-efficient LED lighting. The new lighting has significantly improved safety for motorists, pedestrians, and commuters, markedly enhancing nighttime visibility. The roundabout is used by an estimated 150,000 every day.



## Valenton Fire Station, Paris, France

With a team of over 8,600, the Paris Fire Brigade is responsible for the safety of over 7 million residents and this training centre was essential to ensuring that all firefighting teams have a facility to complete practice missions.

CU Phosco products were used to light this unique training centre, located in Val-de-Marne, designed to emulate an urban city-sized environment. Correct lighting was essential, and our customers were delighted with the uniformity of the floodlights installed.



## Wattisham Flying Station, UK

The low-glare, Dark Sky friendly solution meets all the requirements for CAP168 compliance and limits obtrusive light to the surrounding environment. Furthermore, its excellent CRI ensures excellent visual conditions for the helicopter pilots on the aircraft stands. The floodlight's superior energy efficiency has delivered 64% energy savings, helping VIVO to deliver an annual reduction of £46,000 in electricity costs for the Ministry of Defence, with a payback of under 2.5 years. Furthermore, with sustainability in mind, the luminaire is fully recyclable at the end of its life.



## Évreux-Fauville Air Base, Northwest of Paris

In 2020 a major overhaul began at the base in order to accommodate the first multinational (French & German) military air transport squadron. The development includes three new maintenance hangers, training centres, expansion of the aircraft aprons, de-icing zone, new access road and car park infrastructure. CU Phosco and Ledenco (CU Phosco's agent in France) worked closely with the design consultants, Sogeti Ingenierie, from the outset and provided lighting designs in full accordance with ICAO Annex 14 and customer requirements.

And the High Masts were even installed by helicopter!



## OUR HIGH MASTS

- Raise & Lower and Fixed Head Masts
- From 8m to 60m height
- Bespoke and standard design
- Vast range of applications, from airports to ports to stadiums, CCTV and telecommunications

## SUPERIOR DESIGN & BUILD

- Our masts are designed by our experienced and dedicated in house team of lighting professionals.
- Made in Britain
- Quality assurance to BS EN ISO 9001
- Designed to Professional Lighting Guide 07 and BS EN 1090
- International standards tested
- Warranty assured

## BUILT WITH CIRCULARITY IN MIND

- Responsibly sourced materials
- 100% recyclable or reusable materials
- Designed to meet exact requirements with no unnecessary raw materials required
- Built to last – rigorous testing for load, stress and design and subject to regular maintenance, the life span of our High Masts can be extended significantly







## About CU Phosco

CU Phosco provides an in-house end-to-end service encompassing design, manufacturing, installation and maintenance of high masts, columns, and lighting for the global market. Through design excellence, quality products, project management and a customer-centric approach, our bespoke sustainable infrastructure solutions create safer, brighter, and connected environments.

Established in 1923, our century-long legacy of technical expertise and operational integrity has earned the trust and business of customers worldwide across sectors including road, telecoms, airports, ports, and sports.

Our lighting products are rigorously tested to be used in all environments and are built with circularity in mind. Our lighting columns and masts range from 3 metres to 60 metres in height and can be seen on roads, motorways, at airports and ports, shopping centres, residential areas, and sports stadiums throughout the world.

Our products are  
designed and  
manufactured in the  
UK, and made from  
100% recyclable or  
reusable materials.

