

DESIGNING & MANUFACTURING IN THE UK SINCE 1923



# P107

Next Generation  
LED Luminaire



This luminaire complies with ETL guidelines for White Light Emitting Diode Lighting Units and is eligible for the Enhanced Capital Allowance (ECA) scheme.



01920 860600  
[www.cuphosco.co.uk](http://www.cuphosco.co.uk)  
[enquiries@cuphosco.co.uk](mailto:enquiries@cuphosco.co.uk)



**INTRO**

P107 is a simple, classic Post Top LED Luminaire that has been designed for amenity lighting, minor roads, residential areas, shopping areas, squares, parks and car parks.

P107 utilises the latest LED light source achieving longevity for both LEDs and the drivers. The installation is simple and fast.



|                         |                                       |
|-------------------------|---------------------------------------|
| LUMINAIRE LUMINOUS FLUX | up to 3,770 lm                        |
| LUMINAIRE EFFICACY      | up to 104 lm/W                        |
| LUMEN MAINTENANCE       | L90 > 100,000 hrs (1000mA, Ta = 15°C) |
| PHOTOMETRIC OPTIONS     | 2 distributions                       |

**KEY BENEFITS**

- Elegant and state-of-the-art-design
- Luminaire efficacy up to 104 lm/W
- Wide range of lumen packages
- Maximised savings on energy
- Minimal total cost of ownership
- Flexible and intelligent lighting control options
- IP54 ingress protection
- 100% recyclable

**EXCEPTIONAL OPTICAL PERFORMANCE**

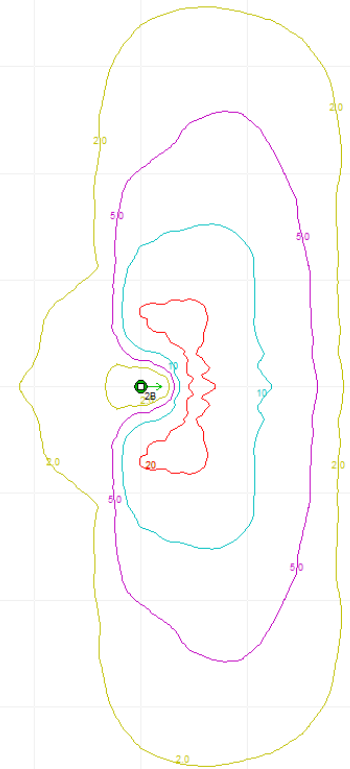
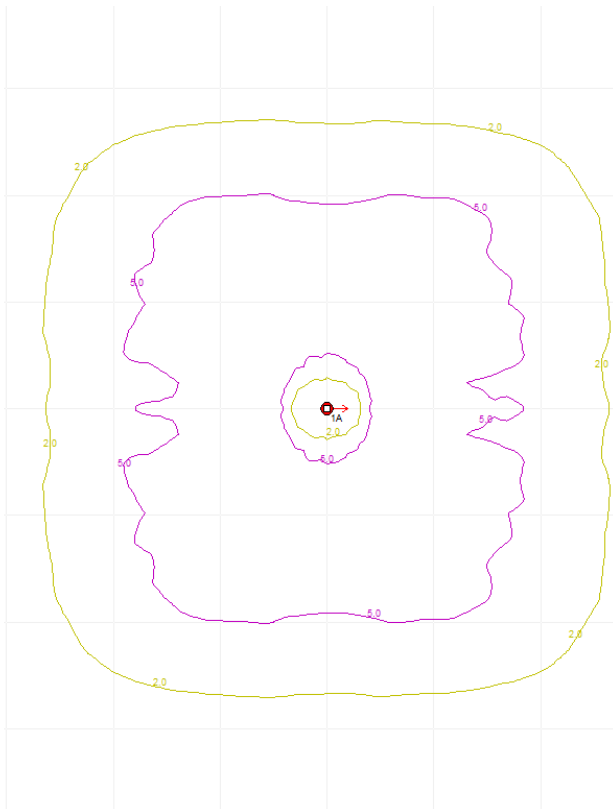
Standard Neutral White LEDs ( CCT = 4000K )  
Optional Warm White LEDs ( CCT = 3000K )  
Colour Rendering Index > 70  
High quality PMMA lenses



**OPTICAL DISTRIBUTIONS**

A2 for Area Lighting:

R2B for Road Lighting:



Light source  
 Number of LEDs  
 Power Consumption  
 Luminaire Luminous Flux  
 Driver Current ( in 50mA steps )  
 Lumen Maintenance Output ( Ta = 25°C )  
 Operating Temperature ( for 100,000 hrs )  
 Weight ( Total )

High Power LEDs  
 12  
 10 ~ 40W  
 950 ~ 3770 lm  
 200mA ~ 1000mA in 50mA steps  
 L90F10 AT 100,000 hours (1000mA, Ta = 15°C )  
 -40°C to +25°C  
 3.6kg

Correlated Colour Temperature  
 Colour Rendering Index  
 Optical Cover  
 Electrical Class  
 Control System Input

Neutral White 4000K ( 3000K optional )  
 > 70  
 Polycarbonate cone  
 I  
 DALI / 1-10V

Surge Protection  
 Dimming Control  
 Lighting Regulation

8 kV Com. Mode 6 kV Diff. Mode to IEC 61000-4-5; 10 kV Single Pulse  
 Multi-step dimming  
 Mini Photocell • CMS (contact for details)

Installation Height  
 Installation

4 ~ 6m  
 PT Ø 60-76mm

Material

Aluminium spigot and canopy • Polycarbonate body • Clear vandal resistant bowl

Finish  
 Colours  
 Ingress Protection  
 Wind Area ( EPA )

Polyester powder coat cured under heat  
 Black as standard, other RAL colours available on request  
 IP54  
 0.13m<sup>2</sup>



Charles House  
 Gt. Amwell, Ware  
 UK, SG12 9TA  
 01920 860600  
 enquiries@cuphosco.co.uk  
 www.cuphosco.co.uk