



AMENITY LIGHTING



CONTACT US

T. +44 (0) 1920 860600
E. hello@cuphosco.com
W. cuphosco.com
W. heperlighting.com

© 2025 CU Phosco

C.U. Phosco
OFFICIAL UK PARTNER **heper**⁺





A LEGACY OF LIGHT: SHAPING THE FUTURE WITH CU PHOSCO AND HEPER LIGHTING

To complement our extensive range, we are the exclusive UK partners for Heper expanding our offering to include architectural and landscape lighting. Whether it's road and pathway illumination or large-area lighting solutions, our partnership ensures a seamless and comprehensive approach to your lighting schemes.

Comprehensive Lighting Expertise

Together, CU Phosco and Heper bring cutting-edge design and technology to a wide range of applications:

- **Bollard Lighting** – Stylish and practical, enhancing pathways and open spaces.
- **Tunnel & Wall Lighting** – Durable solutions ensuring safety and visibility.
- **Post-Top Lighting** – Aesthetically modern designs for urban environments.
- **High Mast & Floodlighting** – Powerful illumination for large areas and industrial sites.

As family-run manufacturers, both CU Phosco and Heper are committed to excellence and progress in lighting technology. Our commitment to excellence ensures we provide not only illumination but also efficiency, sustainability, and modern aesthetics.

WALL-MOUNTED LUMINAIRES

DOGO – Practicality meets design

Discover the perfect blend of functionality and contemporary aesthetics with DOGO. This small yet powerful luminaire is crafted with precision, featuring a **minimalist design** in a **die-cast, corrosion-resistant, and marine-grade aluminium casing**. Ideal for both architectural and outdoor applications, DOGO offers innovative lighting solutions tailored to meet diverse needs.

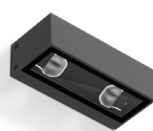
KEY FEATURES:

- **1:6 Lighting Distribution Ratio (DYN)** – Achieve uniform and efficient illumination.
- **Hidden Light with Minimised Glare** – A comfortable and non-intrusive lighting experience.
- **Advanced Reflector Technology** – Provides non-evasive and indirect lighting solutions.
- **Optimised Light Direction** – Choose between **linear forward** or **side throw options**, both offering full cut-off and precision lighting.
- **Heper's Dyno (DYN) Module** – Features high-efficiency LED with flexible lens optics for enhanced performance.

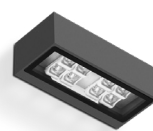
DOGO range is available in five options, depending upon the direction of light required:



DOGO Forward
LW6048.575-EN



DOGO Side
LW6048.585-EN



DOGO 8 LED
LW6048.910-EN



DOGO EX Forward
LW7035.575-EN



DOGO EX SIDE
LW7035.585-EN



BOLLARD LUMINAIRES

CORVUS – The High-Performance, Elegant Bollard Luminaire

Designed to enhance urban spaces, the CORVUS bollard luminaire combines sleek aesthetics with cutting-edge functionality. With its slimline body that discreetly conceals the light source, CORVUS provides a soft, uniform light output while minimising light spill. This luminaire is the ideal choice for outdoor applications where both style and performance are paramount.

Key Features:

- **Advanced LED Technology** – Cost-effective and energy-efficient, with long-lasting performance.
- **Symmetrical Light Distribution** – Optimised to ensure end-user comfort and reduce light pollution.
- **Robust Design** – Constructed from corrosion-resistant, marine-grade extruded aluminium for durability in all conditions.
- **Available in Two Sizes** – Choose between 150mm and 200mm diameters for perfect fitting in your space.
- **Hassle-Free Installation & Maintenance** – Easy to install and maintain, designed with user convenience in mind.
- **Modern Elegance** – Its sleek, contemporary design adds a unique touch to any exterior setting, making it a standout feature in your environment.



CORVUS S
LB6074.555-EN



CORVUS S
LB6075.556-EN



POST-TOP LUMINAIRE

KREIS - The practical and elegant post-top luminaire with a modern twist

The KREIS luminaire is the perfect blend of cutting-edge design and practical functionality. This modern post-top lighting solution is ideal for illuminating pathways, parks, car parks, and other urban spaces, providing a perfect balance of aesthetics and performance.

Key features:

- **Sleek, Modern Design** – The KREIS luminaire offers a minimalist, contemporary design that seamlessly blends into the aesthetic landscape of cities, enhancing the visual appeal of any outdoor space.
- **Efficient Optical Output** – Equipped with a high-performance optic system, KREIS provides maximum light output with minimal energy consumption. Enjoy long-lasting illumination while reducing energy costs.
- **Durability & Longevity** – Built with premium materials and advanced technology, KREIS is designed to withstand the elements, offering reliability and extended service life in even the toughest outdoor environments.
- **Versatility** – Perfect for a wide range of applications, including pathways, parks, car parks, and other urban areas where functional lighting meets elegant design.
- **Sustainable Performance** – Designed with efficiency in mind, the KREIS luminaire ensures low maintenance while maintaining optimal performance throughout its life cycle, making it an environmentally friendly lighting choice.



KREIS
LL2031.511-EN



KREIS C
LL2039.517-EN





About CU Phosco

CU Phosco provides an in-house, end-to-end service encompassing design, manufacturing, installation and maintenance of high masts, columns and lighting for the global market. Through design excellence, quality products, project management and a customer-centric approach, our bespoke sustainable infrastructure solutions create safer, brighter, and connected environments.

Established in 1923, our century long legacy of technical expertise and operational integrity has earned the trust and business of customers worldwide across sectors including road, telecoms, airports, ports, and sports.

Our lighting products are rigorously tested to be used in all environments and are built with circularity in mind. Our lighting columns and masts range from 3 metres to 60 metres in height and can be seen on roads, motorways, at airports and ports, shopping centres, residential areas, and sports stadiums throughout the world.

About Heper

Founded in 1996, Heper is a global leader in outdoor lighting, specialising in architectural, landscape, and tunnel lighting. Operating in over 80 countries across six continents, Heper delivers high-quality, innovative lighting solutions through its production facilities in Turkey, subsidiaries in the USA and Germany, and offices in Dubai, Jordan, and Lebanon. With over 25 years of engineering expertise, the company excels in thermal management and produces durable, eco-friendly LED technologies.

Heper's Lighting Innovation Centre ensures all products meet international standards through rigorous in-house testing. In addition to custom lighting, Heper manufactures custom-designed, seamless aluminum poles, used in its projects worldwide. Known for its tunnel lighting expertise, Heper has successfully completed numerous prestigious national and international projects.

Committed to sustainability, Heper combines innovative, human-centric designs with eco-friendly technologies to improve life through light. To expand its societal impact, Heper works tirelessly every day to enhance its contributions to the community and the environment.