



# P8XX RANGE

DESIGN, MANUFACTURE, INSTALL & MAINTAIN



## CONTACT US

T. +44 (0) 1920 860600  
E. [hello@cuphosco.com](mailto:hello@cuphosco.com)  
W. [cuphosco.com](http://cuphosco.com)

© 2024 CU Phosco





## CU PHOSCO P 8XX RANGE

### A VERSATILE RANGE OF SPECIALIST ROAD LIGHTING

Designed for all road lighting, from motorways, intersections, bridges and beyond, the P8XX Range is a comprehensive luminaire portfolio which will satisfy any lighting project. Designed to meet the most demanding lighting requirements, it combines the latest LED light source with state-of-the-art design, achieving a longer life for both LEDs and drivers, and ensures maximum efficiency and performance.

Our P8XX range can be used in a variety of combinations depending upon the requirements of your scheme, offering advanced LED technology, low cost of ownership and an increased lifecycle. Easy to install and maintain, this range is designed to future proof your lighting scheme.

# HIGH QUALITY, LOW-COST LIGHTING FOR MINOR ROADS

## P852K • MINOR ROADS

P852K is a high-quality, low-cost solution to replace existing sodium discharge and compact fluorescent luminaires on minor roads and residential areas. It offers tool-less entry and is available in 12 LED and 24 HE Versions with Luminaire Efficacy up to 173 lm/W.



## P873

The P873 Post Top LED Luminaire has been designed for amenity lighting, pedestrian crossings, splitter islands at roundabouts and smaller car parks.



# CU PHOSCO P RANGE . HIGHWAYS

## P860, P861 & P862 . KING OF THE ROAD RANGE FOR MOTORWAYS & MAJOR ROADS

Our P86X range, The King of the Road, is designed with high performance in mind, suitable for highways and the toughest of environments. The range has a Highways Industry leading TM66 score of 2.9, awarded by the LIA following the CIBSE scoring method, which recognises it as a sustainable product for use within highways.

## P860 . KING OF THE ROAD

A high Powered Highways Luminaire, the P860 excels in optical performance, thermal management, compatibility and serviceability, bringing an uncompromised outcome of efficiency, versatility and future-proofing for an optimised investment. Specifically designed for highway lighting, it combines the latest LED light source with state-of-the-art design, achieving long life for both LEDs and drivers. Its SMART Safety feature has been tested for over 300,000 cycles of resonant vibration meeting the ANSI C136.31 standard..



## P861 . KING OF THE ROAD

Completing the King of the Road range of Luminaires, the P861 LED contains the same superior optical performance, thermal management, compatibility, and serviceability, as the rest of the King of the Road range, it is also the ultimate solution to replace traditional HID sources. Lightweight and featuring a low profile wind area, the P861 can be safely installed on existing lighting columns and brackets.



## P862 . A DARKSKY APPROVED LUMINAIRE FOR HIGHWAYS

A high-performance LED luminaire, the P862 provides optical excellence as well as being DarkSky Approved, this motorway luminaire is designed for low-cost investment, simple installation and fully tested against the elements.



# CU PHOSCO RANGE . FOR A ROADS & HIGHWAY INTERSECTIONS

## P863 . DARKSKY APPROVED FOR A ROADS & HIGHWAY

The P863 is an LED luminaire provides the same high-quality solution as the rest of the P86X range, however, can be adapted and used for A roads. Smaller in size without compromising efficiency and performance, the P863 replaces traditional HID sources.



## P855-288 . HIGHWAY INTERSECTIONS

P855-288 a highly innovative, high mast LED luminaire with 360° rotating STAR-optic®. The functional yet compact design delivers exceptionally powerful optical and thermal performance, whilst maintaining a low weight and wind area. P855-288's wide range of optical distributions coupled with 360° rotation delivers unlimited freedom in lighting design regardless of luminaire orientation, while optimising energy efficiency for even the most challenging scheme.



- Our Highways Range complies with ETL guidelines for White Light Emitting Diode Lighting Units and is eligible for the Enhanced Capital Allowance (ECA) scheme.

## OUR PROJECTS

### CU Phosco King of the Road Range for Highways

#### M42 SMART Highway, West Midlands, UK

##### P860 & P862 • KING OF THE ROAD RANGE

The SMART Motorway Highway roll out replaced the HID luminaires on the Area 9 network. The King of the Road P860 Highways luminaire was selected for the main carriageway works in conjunction with the P862 smaller road luminaire for the slip road requirements.

The 19-week programme using the CU Phosco LED range provided a white light solution that increased visibility and, subsequently, user safety, as well as reducing the required maintenance regime on the network.

*"For the installation stage of the project Carnell Support Services worked closely in conjunction with Kier Services (Highways) and CU Phosco to manage the site works in accordance with the phased traffic management programme. CU Phosco delivered lanterns on a Thursday of each week just in time for installation on the network the following week. This phased approach meant that the number of luminaires needed to be stored on-site was kept to a minimum which reduced storage costs and security requirements.*

*The luminaires themselves came prewired and have been very reliable and easy to install. Our electricians expressed their preference for fitting these luminaires above the other types we have previously installed."*

STEVE JONES  
CARNELL GROUP

# CU Phosco P86X Range for Minor Roads

## Suffolk County Council, UK

### P863

When Suffolk County Council declared a Climate Emergency, their ambitions were clear: to become a carbon-neutral organisation by 2030. Working in partnership with Bouygues Energies & Services (Bouygues E&S), the aim was to replace 43,400 street lighting lanterns across Suffolk's Roads and residential areas with the new LED Upgrade.

Completed in 12 months, the team used a combination of the CU Phosco E950 and P863 lanterns across the scheme.

### CLEAR RESULTS

- 76% energy savings
- £1.37 million annual electricity cost savings.
- An increase in expected lifecycle due to the LED replacement,
- Improved light cut-offs enhanced safety for residents
- Minimal intrusion to residential properties.

*"The conversion to these new LED lanterns has enabled the council to save a considerable amount on energy costs whilst also reducing maintenance visits and supports our organisation's ambition to become a carbon-neutral organisation by 2030. We look forward to its continued positive impact in the coming years as we realise the benefits of stronger, cheaper, and more environmentally friendly streetlights."*

RICHARD WEBSTER  
Asset Manager - Street  
Lighting at Suffolk  
County Council





## CU Phosco P855 Range for Highway Intersections

### Newcastle, UK

#### P855-228

Part of a multi-disciplinary contractor team, CU Phosco upgraded 26 P855 LED luminaires and high masts in Newcastle and 15 in North Tyneside. The upgraded project reduced energy consumption, lowered carbon emissions and reduced light pollution.

Thanks to the precision 360° rotating STAR-optic® technology, the lighting design was optimised for each location, directing light only where it was needed.

*"Our ten-year partnership with CU Phosco has been a success, and the upgrade to high mast LEDs was no exception. The public highway is now effectively lit, energy and maintenance bills are reduced, and the street furniture's carbon footprint is smaller."*

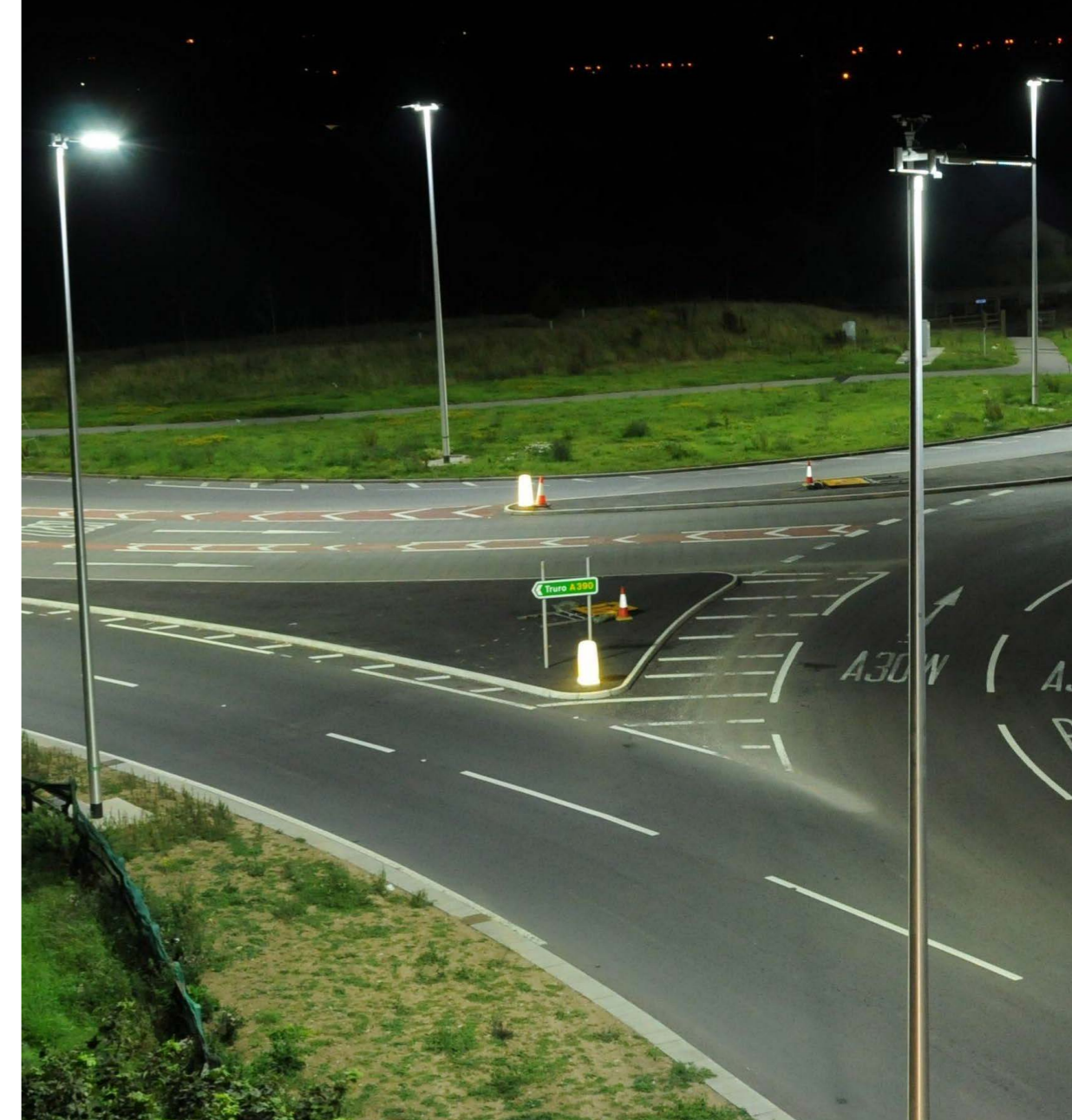
SEAN MIDDLETON  
Operations Manager  
at Enerveo

## CU Phosco Columns

Complement your lighting scheme with a column from the CU Phosco Columns range. CU Phosco offers a full turn-key solution, from design and manufacture of lighting as well as columns and high masts to support your project objectives.

Our Galvanised Columns, available from 3m to 12m in height, are the ideal complement to the E950 and E951. Our columns are designed to take a wide range of lanterns and brackets and can be tailored to the needs of your project.

For highways, our Stepped Columns, Forest Columns, provide lighting to higher levels, ranging from 3m to 12m and in a wide range of sizes and strengths. All CU Phosco lighting column are a designed to BS EN 40 and are UKCA approved.



### INSTALLING YOUR NEXT RESIDENTIAL OR HIGHWAYS PROJECT

At CU Phosco, we don't just manufacture the columns, we offer a full installation and ongoing maintenance to ensure that your columns are set up to last. Our Contract Services Division comprises of highly skilled and qualified installation professionals who complete all installation needs from foundations, to lighting and column installation, as well as ongoing maintenance for the future.



To find out how we can support you, email us at:  
[hello@cuphosco.com](mailto:hello@cuphosco.com)



## About CU Phosco

CU Phosco provides an in-house end-to-end service encompassing design, manufacturing, installation and maintenance of high masts, columns, and lighting for the global market. Through design excellence, quality products, project management and a customer-centric approach, our bespoke sustainable infrastructure solutions create safer, brighter, and connected environments.

Established in 1923, our century long legacy of technical expertise and operational integrity has earned the trust and business of customers worldwide across sectors including road, telecoms, airports, ports, and sports.

Our lighting products are rigorously tested to be used in all environments and are built with circularity in mind. Our lighting columns and masts range from 3 metres to 60 metres in height and can be seen on roads, motorways, at airports and ports, shopping centres, residential areas, and sports stadiums throughout the world.

Our products are designed and manufactured in the UK at our dedicated high-mast facility, and made from 100% recyclable or reusable materials.

